



GAT MONTHLY MEMBERSHIP PROGRESS REPORT

Results as of: 6/30/2023

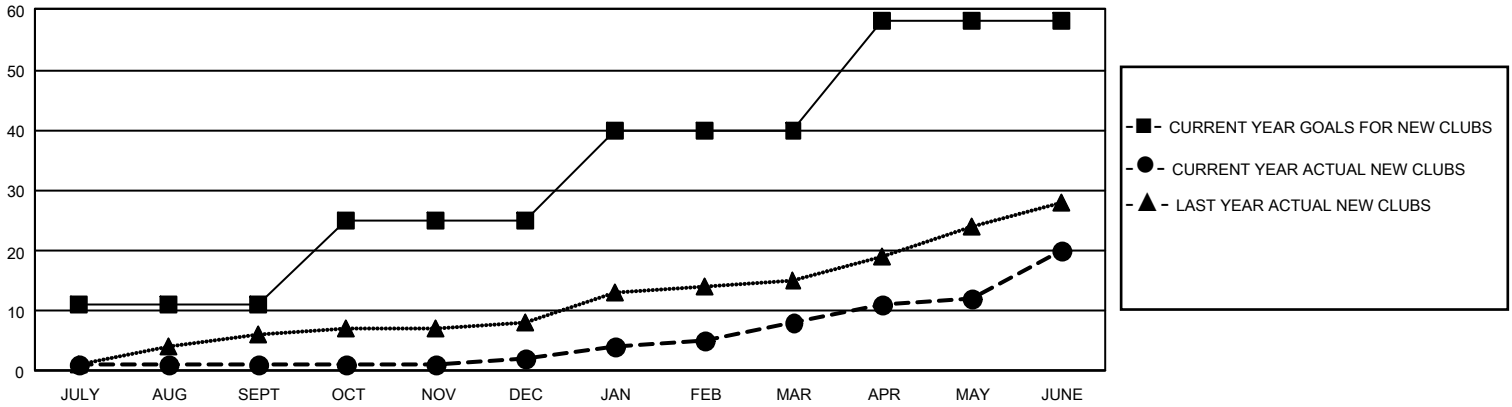
GMT Constitutional Area 4, Group F

REPORT DOES NOT INCLUDE CLUBS IN UNDISTRICTED AREAS.

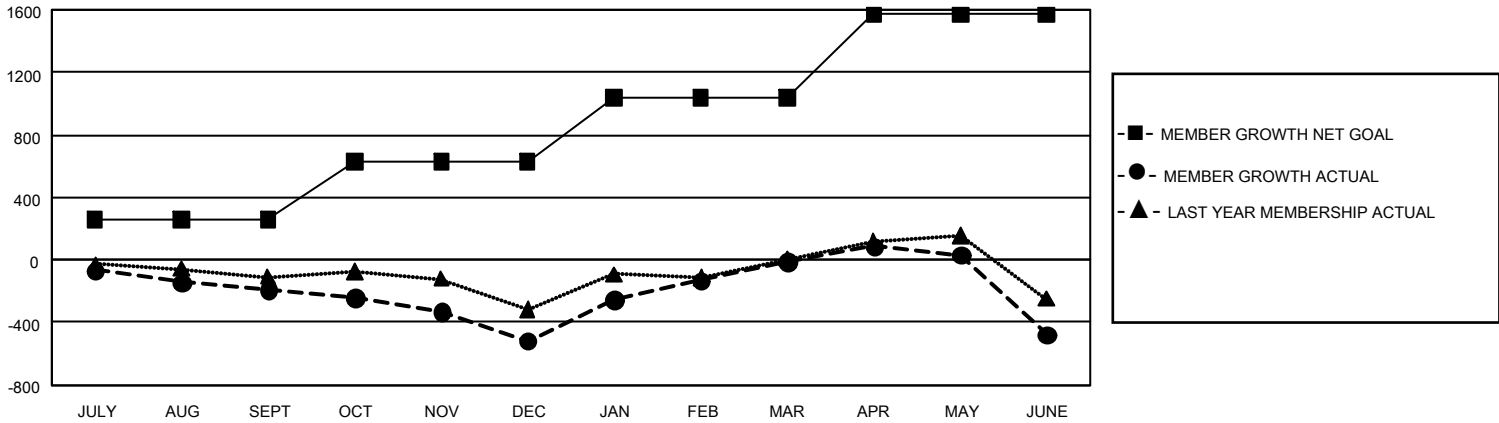
Clubs			
RESULTS FOR 2022-2023			
QUARTER	NEW CLUB GOAL	NEW CLUBS	DROPPED CLUBS
JULY/AUG/SEPT	33	1	6
OCT/NOV/DEC	42	1	4
JAN/FEB/MAR	45	6	1
APR/MAY/JUNE	54	12	11

Members			
RESULTS FOR 2022-2023			
QUARTER	MEMBER GROWTH NET GOAL	MEMBER GROWTH ACTUAL	DROPPED MEMBERS ACTUAL (including transfers)
JULY/AUG/SEPT	257	623	721
OCT/NOV/DEC	374	1,005	1,215
JAN/FEB/MAR	409	1,233	647
APR/MAY/JUNE	531	1,592	1,862

GOALS AND ACTUAL NEW CLUBS CUMULATIVE



GOALS AND ACTUAL MEMBERS CUMULATIVE



DROPPED CLUBS: 22	1,080 CLUBS OF 1,581 ADDED 1 OR MORE NEW MEMBERS	GENDER DISTRIBUTION	
		MALE 29,322 (68.09%) FEMALE 13,739 (31.90%) NON BINARY 0 (0.00%) PREFER NOT TO ANSWER 5 (0.01%)	
DROPPED MEMBERS		CLICK HERE FOR CUMULATIVE MEMBERSHIP DATA	TOTAL FAMILY UNIT MEMBERS 3,584
DECEASED 479 CLUB CANCELLED 171 OTHER 3,796 TOTAL 4,446	FAMILY MEMBERS PAYING HALF DUES 1,861		